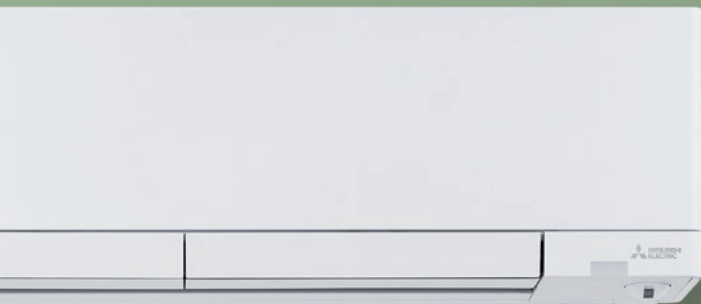


# The future of comfort is *Electric*





A warm, intimate scene of a child and an adult playing under a white play tent in a child's room. The tent is decorated with string lights and stuffed animals. A white Mitsubishi Electric heat pump is mounted on the wall above the tent. The room is softly lit by a lamp and the tent's lights.

Let's create a  
future where our  
environments  
exist in harmony.

A wide-angle night photograph of a calm lake reflecting the twilight sky. Dark, silhouetted mountains frame the water. A single light source on the far shore creates a bright, shimmering reflection on the water's surface.

Designed for life,  
inside and out.

Experience the balance between elevated comfort and environmental sustainability with Mitsubishi Electric's all-electric, all-climate heat pumps. More than just a trend, they're a step toward a more eco-friendly future while setting new standards for personal comfort in any climate.

Our premium systems are meticulously designed to deliver astounding energy efficiency, performance, and control. Every component undergoes rigorous testing to ensure a powerful, reliable product.

With a wide range of options, we offer the perfect solution for creating comfortable, sustainable spaces for you and your family.



# Heat pumps and electrification

A heat pump is a heating and cooling system including an outdoor unit connected to one or more indoor units. These indoor and outdoor units work together to move warm air inside during cold seasons or outside of your home during hot seasons, providing comfort in any climate.



Going all-electric with your home’s heating and cooling system comes with numerous benefits, including improved energy-efficiency and a reduced carbon footprint for your home, compared to conventional systems.

## Elevated comfort, lower impact



### Get better efficiency

Across our wide array of available products, our heat pumps are between **160–390% more efficient** than gas-burning furnaces<sup>1</sup>.



### Use less energy

According to the U.S. Department of Energy, today’s heat pumps can **reduce your electricity use for heating by about 65%** compared to electric resistance heating.



### Cut greenhouse gas emissions

All-electric heat pump systems **do not produce carbon dioxide (CO2)** or other greenhouse gas emissions, unlike fuel-burning HVAC options.



### Save with credits and incentives

The Inflation Reduction Act (IRA) of 2022 offers up to **\$2,000 in tax credits** for qualified heat pump systems\*. Credits can be combined with local and utility incentives for increased savings.

\* Federal income tax credit available to U.S. homeowners only for qualifying heat pump models. Terms and conditions for tax credit are dependent on federal and state laws and regulations and are subject to change. Contact your tax advisor for further requirements and to confirm eligibility for tax credits.



# A smarter way to heat and cool



In **cooling mode**, a heat pump works by moving heat from inside the home to the outside. The indoor unit absorbs and sends the room's heat to the outdoor unit, where it is cooled and returned to the room to provide you with cold air.



In **heating mode**, this process is reversed. Even in freezing temperatures, there is heat in the air to be absorbed and delivered into indoor spaces. This heating process is much cleaner than burning fossil fuels and results in zero greenhouse gas emissions.



Scan the QR code to watch how our heat pumps work.



## Imagine HVAC on cruise control

Mitsubishi Electric heat pumps feature **variable-capacity compressors** that automatically adjust the fan speed to maintain your desired temperature using minimal power. Similar to cruise control in your car, they seamlessly adapt to changing conditions to keep a consistent temperature. In contrast, conventional compressors turn on and off like stop-and-go traffic, resulting in temperature swings and higher energy consumption.

## Hands off the thermostat

Since heat pumps provide both heating and cooling, you can simply set your ideal temperature and let the system handle the rest. It automatically chooses the most efficient mode to keep you comfortable year-round.





# All-climate comfort

-22°



115°

Mitsubishi Electric heat pumps with H2i® Hyper-Heating INVERTER technology deliver reliable comfort in temperatures as low as -22°F and as high as 115°F. With this innovative technology, you can enjoy consistent comfort throughout the year, even in the most challenging climates.

## Why choose Mitsubishi Electric



### Heat pump pioneers

Mitsubishi Electric pioneered the world's first all-electric mini-split heat pump in the 1970s, and were also the first to bring this energy-efficient innovation to the U.S. market.



### Obsessed with quality

Unlike other manufacturers who source parts from low-cost suppliers, we control every step of the manufacturing process. This allows us to ensure that even the smallest screw meets our strict **Mitsubishi Electric Quality** standards.



### Serving a larger purpose

All-electric heat pumps are not just one part of our business—they're everything we do. We're committed to advancing sustainable electrification and actively collaborate with government agencies to help shape policies that push this movement forward.

## The brand HVAC Pros trust

Scott Libby, owner of Royal River Heat Pumps in Maine and an Elite Diamond Contractor®, specializes in installing Mitsubishi Electric heat pump systems.

Over the course of his nearly 40 years in the HVAC industry, he has moved his business away from conventional fossil-fuel burning heating and cooling options and has chosen to focus only on energy-efficient all-electric, all-climate heat pumps. In fact, he has found Mitsubishi Electric systems to be so reliable that he can shut down his business for 10 days between Christmas and New Years:

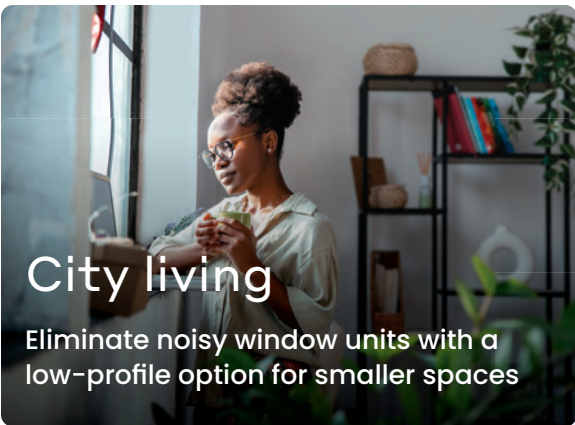


**"Even in Maine winters, the odds that we'll get an emergency call [to service a Mitsubishi Electric system] are so low that, while we always have volunteers on-call for emergencies, I can let the rest of the team enjoy the holidays with their families."**



# Electrify your HVAC, your way

Heat pumps are installed directly in the spaces they heat and cool, allowing for zone-by-zone control. Temperature, airflow direction, and speed can be set based on your preferences, giving you full comfort control. This sets our solutions apart from the one-size-fits-all model of conventional ducted solutions.



**City living**  
Eliminate noisy window units with a low-profile option for smaller spaces



**Generator-friendly**  
Works with home generators for constant comfort during power outages



**Ultra-quiet**  
Hear what really matters – not your HVAC system

Our all-electric, all-climate heat pumps are the right solution for any space.



Scan here to find your perfect fit

Mitsubishi Electric heat pump systems offer several indoor ductless installation options to fit your home's unique design and comfort needs, including wall-mounted, floor-mounted, and ceiling-recessed units.



**Room-by-room**  
Add comfort to home additions, rooms over garages, and basements

## Single-zone

One outdoor unit connects to one indoor unit. This is ideal if you want to add heating or cooling control to a single space, which can be as small as a bedroom or as large as an entire floor in your home.



**Tiny homes**  
HVAC that fits your tiny home, ADU, or shed



**Solar-ready**  
Compatible with solar power for an even more sustainable HVAC system



**Historic homes**  
No ducts? No worries with whole-home ductless options

## Whole home

Connect up to eight indoor units to one outdoor unit to create individually controlled zones with their own temperatures and settings. Or, you can electrify your home by switching your gas furnace for an air handler with our intelli-AIR™ system, while still using your existing ducts.







Which heat pump



is right for you?



PRODUCT STYLES

# Wall-mounted indoor units

Ductless wall-mounted units are quicker and easier to install than conventional ducted systems, more energy efficient, and the perfect solution for any room or a whole home. We offer a wide range of slim, stylish indoor mini-split units.



FEATURE-RICH

## FX Deluxe

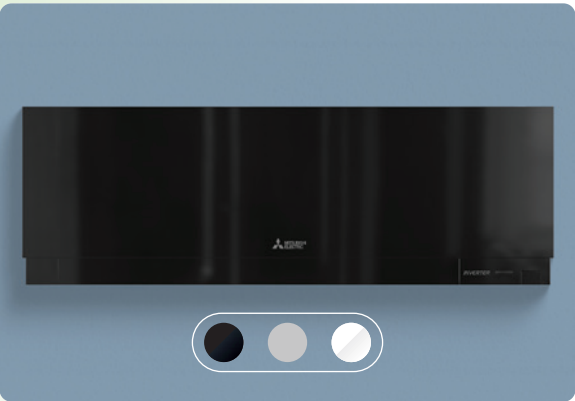
The Deluxe Wall-mounted Indoor Unit features the 3D i-see Sensor® and offers dual vane operation. The sensor scans the room for occupancy and adjusts the temperature and airflow accordingly. The Deluxe model includes more premium features, like Dual Barrier Coating and Dual Barrier Fusion, which reduce the collection of contaminants on the inner surface of the indoor unit.



MOST POPULAR

## GX Premier

The versatile Premier Wall-mounted Indoor Unit has a wide range of airflow capabilities to ensure conditioned air reaches every corner of a room. The unit features Dual Barrier Coating, which helps keep the inside clean, and a Powerful Mode for rapidly cooling or heating your space.



THREE COLOR OPTIONS

## EX Designer

The Designer Wall-mounted Indoor Units combine innovative technology, multi-stage airflow, filtration and a sophisticated design. It has clean, slim lines and three finish options (gloss black, matte silver, or gloss white).



LOW-MOUNTED

## MFZ-KX

The MFZ-KX features a slim, stylish design that can be mounted low on the wall and partially recessed, offering an attractive alternative to conventional baseboard heaters and radiators. Its unique vane system ensures precise airflow control for optimal comfort.

WALL-MOUNTED INDOOR UNITS

# Premium features\*

The **3D i-see Sensor®** actively scans a room to determine if it is occupied and adjusts the temperature and air flow according to your preferences.

**H2i sumo™ Hyper-Heating** models provide 100% heating capacity even in outdoor temperatures as low as -10° F with guaranteed heating down to -22° F.

**Wi-Fi enabled** units can connect with our Comfort app, so you can control temperature, schedules, and more from your smart device.

With **auto changeover**, systems can automatically switch between heating and cooling, so you can stay comfortable in any season.

**Dual Barrier Protection** reduces the collection of contaminants like dust, fibers, smoke, and oil on system components, resulting in optimal efficiency and easier maintenance.

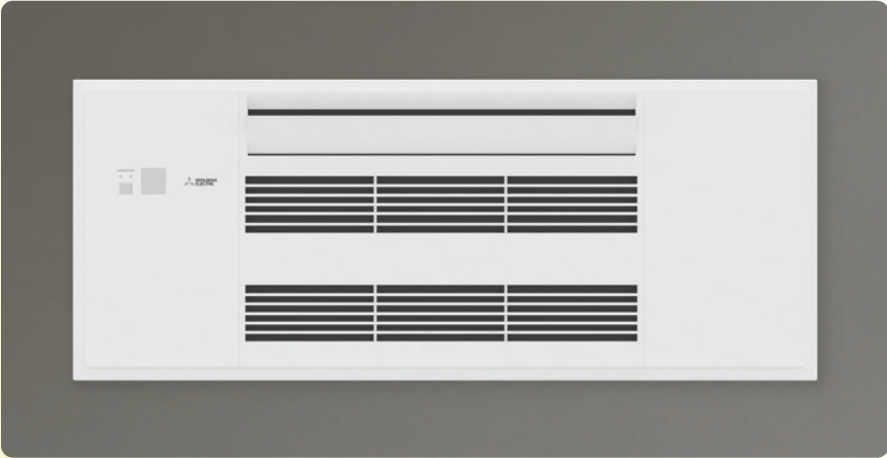
\*All features may not be available on every unit. Consult your contractor for details.



PRODUCT STYLES

# Ceiling cassettes

Ceiling-recessed and ceiling-suspended units provide a flush-mount appearance that gives you versatile comfort, without detracting from your decor.



## EZ-FIT® Ceiling-recessed Indoor Unit

Designed to fit between standard ceiling joists, the EZ-FIT Ceiling-recessed Indoor Unit seamlessly integrates into your ceiling, making it one of our most popular ductless options. High/low ceiling airflow settings, automatic vane control, and multi-stage filtration personalize room comfort.



## Four-way Ceiling-recessed Indoor Unit

Mounted flush with the ceiling, the ductless Four-way Ceiling-recessed Indoor Unit fits into a 2'x2' suspended ceiling grid. Four multi-directional vanes can be customized to provide 72 unique airflow patterns, and the 3D i-see Sensor® scans the room for occupancy, then adjusts temperature and airflow accordingly.



CEILING CASSETTES

# Premium features\*

**Flush-mounted design** provides even air flow without impacting the aesthetic of the room or taking up wall space.

**The 3D i-see Sensor®** actively scans a room to determine if it is occupied and adjusts the temperature and air flow according to your preferences.

**Swing mode** allows an indoor unit to move air throughout the room like an oscillating fan.

**Wi-Fi enabled** units can connect with our Comfort app, so you can control temperature, schedules, and more from your smart device.

**Econo cool** is an energy-saving feature that temporarily adjusts the amount of air directed toward occupants.

\*All features may not be available on every unit. Consult your contractor for details.





PRODUCT STYLES

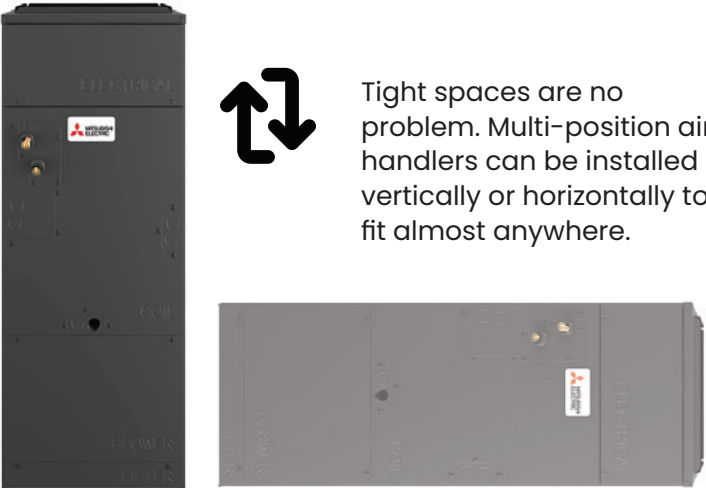
# Intelli-AIR™ ducted solutions

Designed to provide environmentally sustainable, energy-efficient comfort year-round, our Intelli-AIR ducted products connect to existing ductwork to deliver heating and cooling for one room or your entire home. You can even expand your system's reach by adding one or more ductless units for areas your ducts can't reach.

## Multi-position Air Handler

The whisper-quiet, compact Multi-position Air Handler is designed for horizontal or vertical installation for simplified installation and maintenance. With best-in-class construction and a built-in humidifier, this energy-efficient air handler is an ideal replacement for conventional fossil-fuel burning systems, new builds, additions, and retrofits.

Intelli-AIR ducted solutions are available in a wide range of capacities, making them perfect for all size homes, and light commercial applications such as offices, retail, and restaurants.



Tight spaces are no problem. Multi-position air handlers can be installed vertically or horizontally to fit almost anywhere.



PRODUCT STYLES

# Hybrid comfort with Intelli-HEAT®

## Making the switch to electric a no-brainer

The Intelli-HEAT dual fuel system integrates with your existing gas furnace to optimize heating by switching between electricity and gas based on the most efficient and effective option for your climate. If indoor temperatures aren't maintained due to extreme conditions, the **Intelligent Switchover** feature seamlessly transitions between the all-electric Intelli-HEAT unit and your existing gas furnace.

Designed to fit most ducted gas furnaces, Intelli-HEAT enhances energy efficiency, reduces carbon emissions, and adds all-electric cooling for year-round comfort in any climate.





# Total comfort control

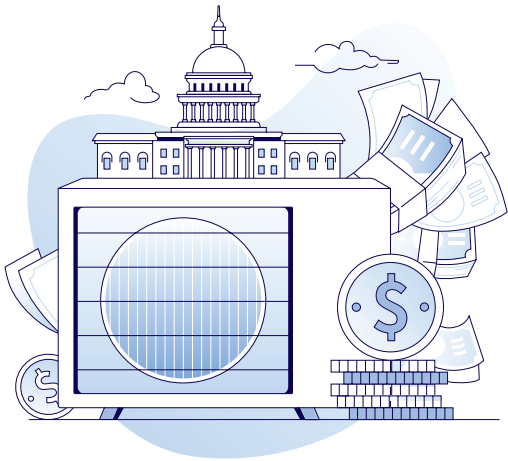
Elevate your comfort and manage your energy efficiency with easy-to-use smart comfort controls that are so much more than a conventional remote or thermostat. Remotes come standard with most units, and other control options are available to add convenience.



The **Comfort app by Mitsubishi Electric** places control of your home's heating and air conditioning at your fingertips, no matter where you are. Adjust room temperatures, set schedules, control airflow, and easily change your system from cooling mode to heating mode and back.



We offer a wide range of wired and wireless control solutions. Whether using our Comfort app, wired or wireless thermostats, or connecting a thermostat of your choice, you can easily manage your comfort with precision.



Scan here to find incentives where you live

## Heat pump rebates and incentives

The electrification movement is picking up speed, and new government programs are available to make the switch easier. Going all-electric with a heat pump system may come with federal incentives, tax credits, and local utility rebates.

**The Inflation Reduction Act (IRA)** of 2022 is the largest ever climate investment by the federal government in American history. This energy relief bill incentivizes the adoption of efficient, all-electric appliances, like our heat pumps. Through the IRA, an income tax credit equal to 30% of cost, up to \$2,000, on qualifying heat pump installations, is available for eligible homeowners\*. This incentive can be combined with other local, state, and utility rebates for maximum savings.

Visit [MitsubishiComfort.com](https://MitsubishiComfort.com) or scan the QR code above to find rebates and incentives in your area and see how much you could save.

\*Federal income tax credit available to U.S. homeowners only for qualifying heat pump models. Terms and conditions for tax credit are dependent on federal and state laws and regulations and are subject to change. Contact your tax advisor for further requirements and to confirm eligibility for tax credits.



# Industry-leading warranties<sup>2</sup>



Choosing a specially-trained Diamond Contractor® or Ductless Pro for your heat pump installation comes with benefits including an extended warranty for added peace of mind.

## 12-year warranty

Most products that are registered by a Diamond Contractor or Ductless Pro within 90 days of installation receive a 12-year parts and compressor warranty.

## 10-year warranty

Products that are registered within 90 days of installation receive a 10-year parts and compressor warranty.

## 5- and 7- year warranties

All products, whether registered or not, receive a 5-year parts warranty and a 7-year compressor warranty.



Together, we can create  
better environments  
inside, and out.

Join the electrification movement by upgrading your comfort with a Mitsubishi Electric heat pump system.

Discover more at [MitsubishiComfort.com](https://www.mitsubishicomfort.com).







MITSUBISHI ELECTRIC TRANE HVAC US



1. Efficient rating for each of our current heat pump models are located at [ahridirectory.org](http://ahridirectory.org).

"Efficiency" or "efficient" means that the heat pump delivers that amount more energy (in the form of heat) than the heat pump consumes in electricity. COP (coefficient of performance) is a measure of energy efficiency, with a higher efficiency associated with a higher COP. A COP of 1 is equivalent to 100% efficiency and a COP of 2 is equivalent of 200% efficiency (that is, it delivers twice that amount more energy in the form of heat than it consumes in electricity). Our "heat pump systems" are comprised of connected current models of Mitsubishi Electric outdoor and indoor heat pump units. COP rating testing was performed at 47° F, the industry standard. Furnaces can only, at their theoretical best, achieve 100% efficiency, or a COP of 1. Therefore, our heat pump systems, which have a COP of at least 2.6, have a COP of more than 1.6 that of gas-burning furnaces (which have at most a COP of 1) and are 160% more efficient.

2. All warranties are subject to terms and conditions. Visit [mitsubishicomfort.com/warranties](http://mitsubishicomfort.com/warranties) for more information.

©2024 Mitsubishi Electric Trane HVAC US. All rights reserved.  
ME\_RS\_2682\_10-24

